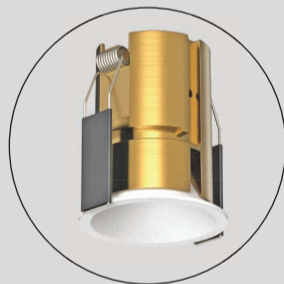
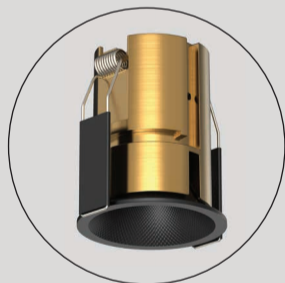
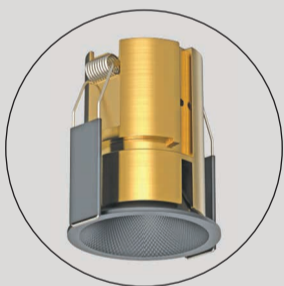


KORNET

divinity lights





KORNET

Kornet has:

- Luminaire housing of die-cast-aluminium
- Round recessed spotlight with effortless installation
- Premium powder coated finish
- COB (Chip on Board) technology
- Fixtures for highlighting as required
- For specific areas or to accentuate a feature
- LED with effective colour rendering
- Overflowing colours with soft light and shadow
- Interpretation of the real environment light and colours
- Zero multiple shadows

Quick Info

CRI ≥ 90

3000K/ 4000K/ 5700K

Tunable white (2700K-6500K)

ON-OFF/ON-OFF (FLICKER FREE)

DALI-2 DT6 / DALI-2 DT8/ DALI+

SDCM<3

Lens & Refelctor

L70 @50,000h

Aluminium Die-cast

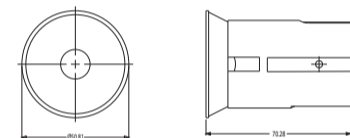
Types

Recessed

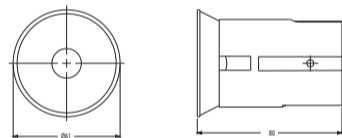
Single Line Diagram

Recessed

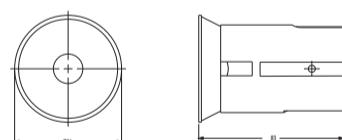
KORNET 51



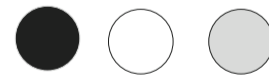
KORNET 61



KORNET 71

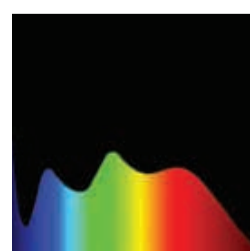


Colours



Light Distribution

Direct



CRI ≥ 90



TUNABLE WHITE

KORNET



KORNET (DIRECT)

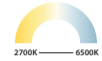
Product Order Code	System Power	Dimensions
4052-1	8W	Cutout Dia = 43.46mm Outer Dia = 50.81mm H = 70.28mm
4052-2	12W	Cutout Dia = 54mm Outer Dia = 61mm H = 80mm
4052-2	15W	Cutout Dia = 61mm Outer Dia = 71mm H = 83mm

Order Options

Distribution

Direct

CCT (Colour Temperature)	
3000K	1
4000K	2
5700K	3
Tunable White 2700K-6500K	4



CRI	
>90	1

Beam Angle

38°

Control		
ON-OFF		1
ON-OFF (FLICKER FREE)		2
DALI-2 DT6		3
DALI-2 DT8		4
DALI +		5

Mounting Type

Recessed 1

Material Colour

Matt Black		1
Silver		2
White		3

Reflector Colour

Matt Black		1
Gun Black		2
Rose Gold		3
Silver		4
White		5